

lumepius



my light my life



• LP636 T60

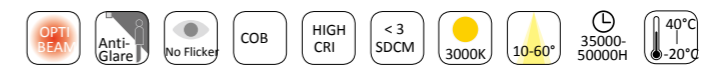


• LP736 T60

Installation :



Colour :



Datasheet

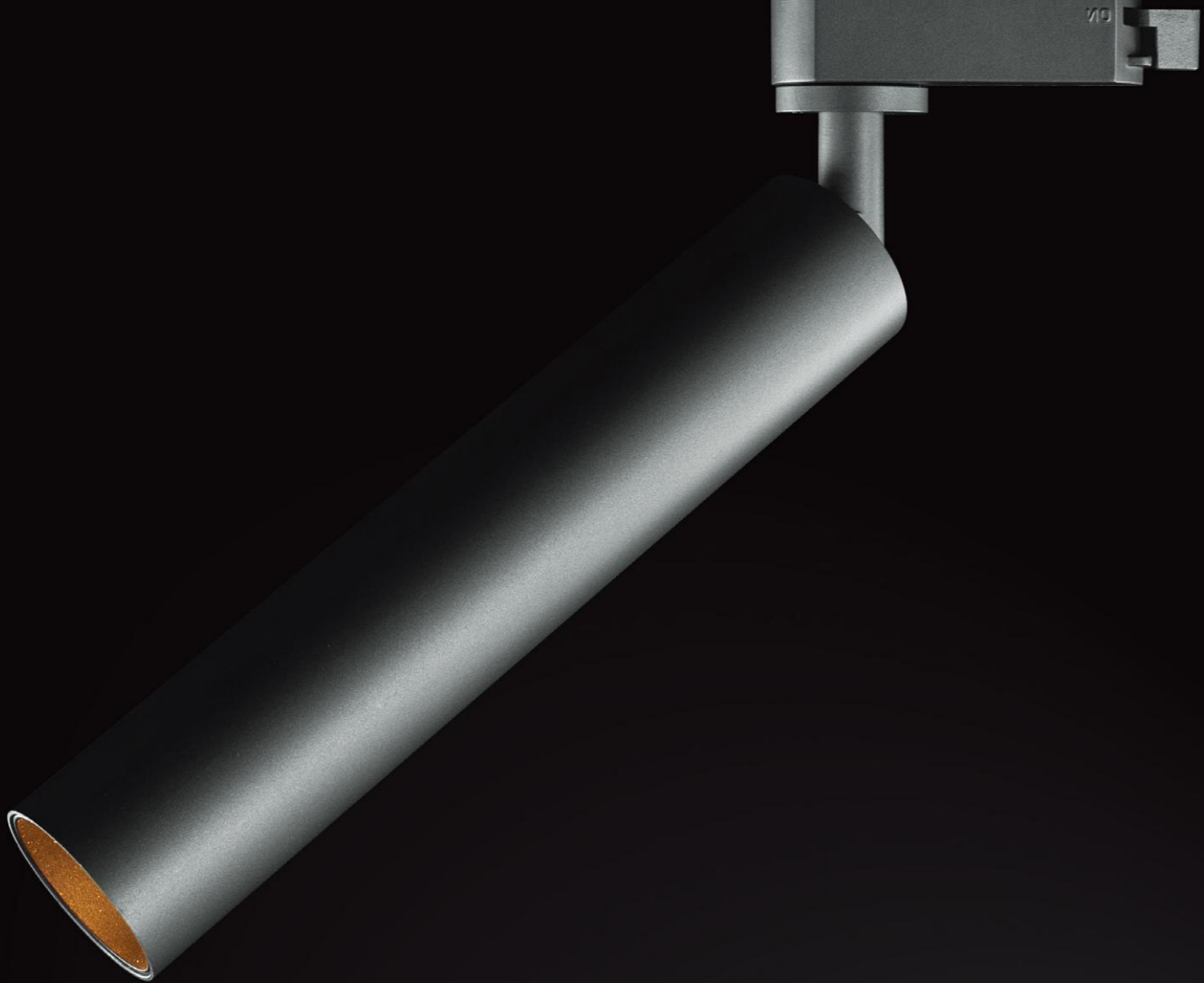
Model No.	Lamp	lumen	CRI	Diameter(mm)	length(mm)
LP-636 T60	COB 9W	616lm	Ra≥90	Φ60	136
LP-736 T60	COB 9W	616lm	Ra≥90	Φ60	136

Accessories :



F39

T39



● LP-636 040



● LP-736 040

Installation : Track Surface TitaniumBlack

-
-
-
-
-
- < 3 SDCM icon"/>
-
-
-
-
-

Datasheet					
Model No.	Lamp	lumen	CRI	Diameter(mm)	length(mm)
LP-636 040	COB 7W	297lm	Ra≥90	Φ40	200
LP-736 040	COB 7W	297lm	Ra≥90	Φ40	200



lumeplus



● LP636 050



● LP736 050

Installation :



Colour :



Datasheet

Model No.	Lamp	lumen	CRI	Diameter(mm)	length(mm)
LP636 050	COB 9W	440lm	Ra≥97	Φ50	140
LP736 050	COB 9W	440lm	Ra≥97	Φ50	140

LATOUR



lumeplus



● LP8636 060

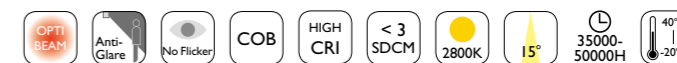


● LP8736 060

Installation :



Colour :



Datasheet

Model No.	Lamp	lumen	CRI	Diameter(mm)	length(mm)
LP636 060	COB 15W	572lm	Ra≥97	Φ60	155
LP736 060	COB 15W	572lm	Ra≥97	Φ60	155

LATOUR



lumeplus



● LP699 301



● LP799 303

Installation :



Colour :



Datasheet

Model No.	Lamp	lumen	CRI	Diameter(mm)	length(mm)
LP699 301	COB 7W	385lm	Ra≥97	Φ48	119
LP799 303	COB 7W	385lm	Ra≥97	Φ48	119

GORDON



● LP836 A35



● LP836 035



● LP836 045



● LP836 055

Installation :



Recessed

Colour :



Titanium



White



Datasheet

Model No.	Lamp	lumen	CRI	Diameter(mm)	High(mm)	Cut(mm)
LP836 A35	COB 1W	66lm	Ra≥90	Φ45	25	Φ35
LP836 035	COB 1W	66lm	Ra≥90	Φ45	52	Φ35
LP836 045	COB 3W	175lm	Ra≥90	Φ55	61	Φ45
LP836 055	COB 7W	357lm	Ra≥90	Φ65	71	Φ55



● LP854 060



● LP854 070



● LP854 065



● LP854 075

Installation :



Recessed

Colour :



White



Datasheet

Model No.	Lamp	lumen	CRI	Diameter(mm)	High(mm)	Cut(mm)
LP854 060	COB 7W	400lm	Ra≥90	Φ68	53	Φ60
LP854 070	COB 7W	400lm	Ra≥90	Φ78	53	Φ70
LP854 065	COB 9W	515lm	Ra≥90	Φ74	56	Φ65
LP854 075	COB 9W	515lm	Ra≥90	Φ85	56	Φ75
LP854 095	COB16W	910lm	Ra≥90	Φ110	79	Φ95

Accessories :



R60 B60 G60 Y60 F60



ACCORD IP44



● LP854 060-S



● LP854 065-S

Installation :



Recessed

Colour :



White



Datasheet

Model No.	Lamp	lumen	CRI	Diameter(mm)	High(mm)	Cut(mm)
LP854 060-S	COB 7W	400lm	Ra≥90	Φ68	53	Φ60
LP854 065-S	COB 9W	515lm	Ra≥90	Φ74	56	Φ65



● LP853 311-S



● LP853 312-S

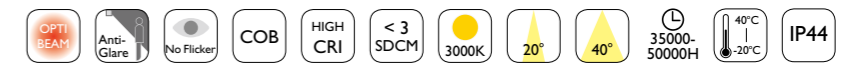
Installation: Colour:



Recessed



White



Datasheet

Model No.	Lamp	lumen	CRI	Diameter(mm)	High(mm)	Cut(mm)
LP853 311-S	COB 12W	720lm	Ra≥90	Φ94	63	Φ85
LP853 312-S	COB 12W	720lm	Ra≥90	94 x 94	63	85 x 85



LATOUR



● LP298 PAR16



● LP298 PAR20

Installation :



Lamps

Colour :



Titanium



Datasheet

Model No.	Lamp	lumen	CRI	Diameter(mm)	High(mm)
LP298 PAR16	COB 5W	260lm	Ra≥95	Φ50	78
LP298 PAR20	COB 7W	360lm	Ra≥95	Φ65	93
LP298 PAR30	COB 12W	615lm	Ra≥95	Φ95	123

PAR16 Accessories :



L16



TL16

PAR20 Accessories :



L20



TL20



F39



T39



● LP299 301



● LP299 302

Installation :



Lamps

Colour :



Titanium



Datasheet

Model No.	Lamp	lumen	CRI	Diameter(mm)	High(mm)
LP299 301	COB 7W	360lm	Ra≥97	Φ50	78
LP299 302	COB 7W	360lm	Ra≥97	Φ50	110



GORDON



● LP899 301



● LP799 302

Installation :



Surface

Colour :



Titanium



Black



Datasheet

Model No.	Lamp	lumen	CRI	Diameter(mm)	High(mm)
LP799 301	COB 7W	360lm	Ra≥97	Φ55	200
LP799 302	COB 7W	360lm	Ra≥97	Φ55	225



● LP899 301



● LP499 311



● LP499 302



● LP499 312

Installation:



wall

Colour:



Titanium



Black



Datasheet

Model No.	Lamp	lumen	CRI	Diameter(mm)	High(mm)
LP499 301	COB 7W	360lm	Ra≥97	Φ56	208
LP499 311	COB 7W	360lm	Ra≥97	Φ56	233
LP499 302	COB 7W x 2	360lm x 2	Ra≥97	Φ56	316
LP499 312	COB 7W x 2	360lm x 2	Ra≥97	Φ56	366



LATOUR

lumeplus



Installation :



Pendants

Colour :



Titanium



Black

OPTI-BEAM, Anti-Glare, No Flicker, COB, HIGH CRI, < 3 SDCM, 2700K, 15°, 24°, 35000-50000H, 40°C / -20°C

Datasheet

Model No.	Lamp	lumen	CRI	Diameter(mm)	High(mm)
LP536 040	COB 5W	215lm	Ra≥90	Φ40	600

GORDON



lumeplus



• LP599 302



• LP599 301

Installation :



Pendants

Colour :



Titanium



Black



Datasheet

Model No.	Lamp	lumen	CRI	Diameter(mm)	High(mm)
LP599 301	COB 7W	360lm	Ra≥97	Φ55	200
LP599 302	COB 7W	360lm	Ra≥97	Φ55	225



Company History

2013

Expanded product lines for architectural feature lighting targeting luxury commercial projects.

2015

Introduced semi-auto equipment, production output exceeded one million pieces.

2017

Established a new "leading edge" industry park to meet increasing demand from domestic and overseas markets.

2018

Awarded as Best Decorative High-tech Enterprise and responsive to social commitment.

2013

Launched dedicated lighting design department for international project support.

2012

Launched new LED product lines for a wide variety of commercial applications.

2011

Started cooperation with international customers and co-developed high-end commercial lighting products.

2010

Established overseas sales with product lines targeting international specifications.

2009

Company established with the vision of improving interior lighting environment.